

Available in May 2017

To All Advertising Agencies & Clients

➔ **Roof Top on Zalka – Facing Mobili Top**



- **Code:** Z3
- **Face:** A
- **Location:** Zalka – Facing Mobili Top
- **Direction:** Jounieh
- **Dimensions:** 15m x 8.75m
- **Monthly Rental:** \$8,600

Available in May 2017

To All Advertising Agencies & Clients

➔ **Roof Top on Antelias – Rim Bldg.**

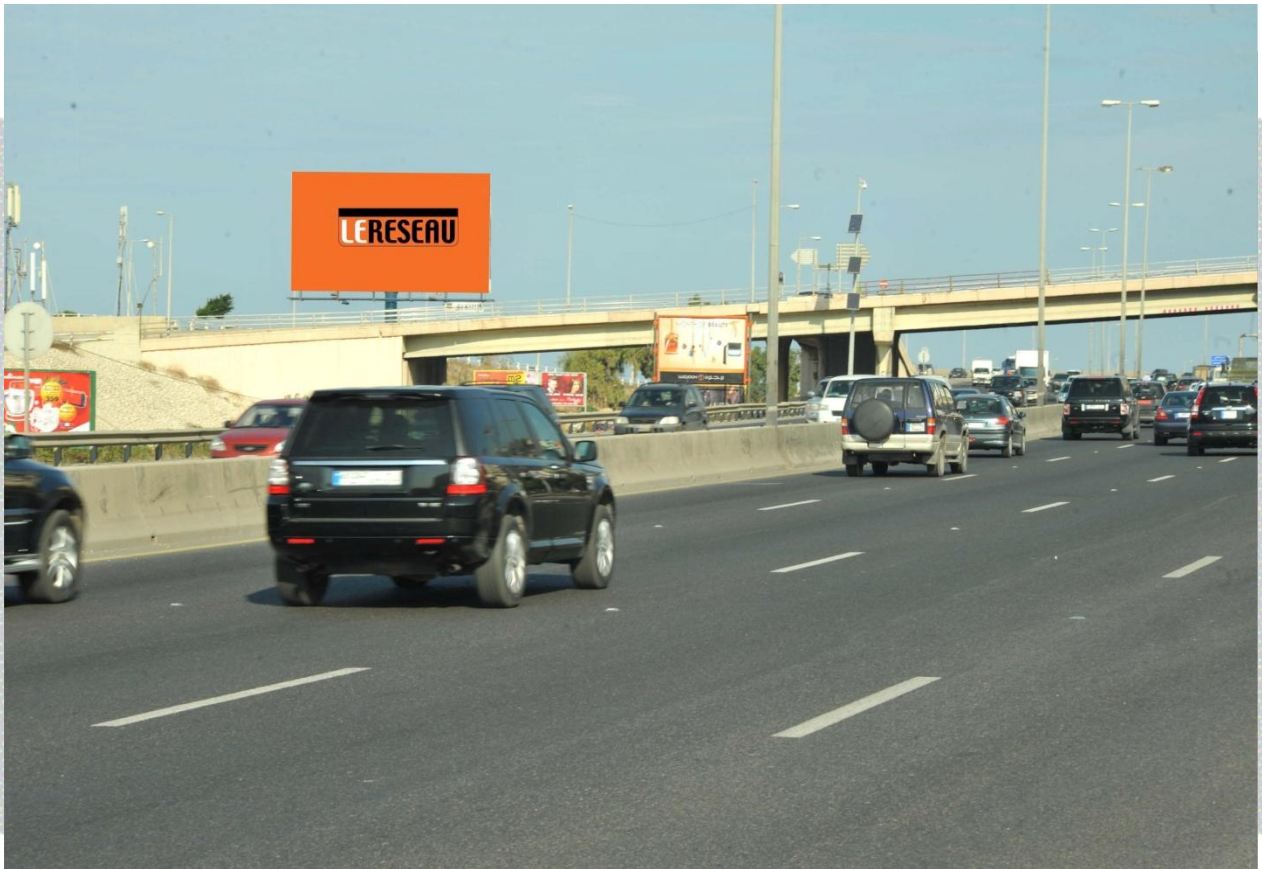


- **Code:** D1
- **Face:** A
- **Location:** Antelias – Rim Bldg.
- **Direction:** Jounieh
- **Dimensions:** 20m x 10m
- **Monthly Rental:** \$10,450

Available in May 2017

To All Advertising Agencies & Clients

➔ **Megapole on Dbayeh Highway – Le Royal Bridge**



- **Code:** D7
- **Face:** B
- **Location:** Dbayeh Highway – Le Royal Bridge
- **Direction:** Jounieh
- **Dimensions:** 15m x 8.8m
- **Monthly Rental:** \$5,750

Available in May 2017

To All Advertising Agencies & Clients

➔ Roof Top on Quarantine – Before Forum



- **Code:** B3
- **Face:** A
- **Location:** Quarantine - Before Forum
- **Direction:** Dora
- **Dimensions:** 9m x 5.5m
- **Monthly Rental:** \$4,900

For more information please contact **Le Réseau** team on 01/611115

Available in May 2017

To All Advertising Agencies & Clients

➔ **Roof Top on Tabaris – SNA Intersection**



- **Code:** MART1
- **Location:** Tabaris – SNA Intersection
- **Direction:** Downtown
- **Dimensions:** 6m x 3m
- **Monthly Rental:** \$7,150

Available in May 2017

To All Advertising Agencies & Clients



Bridge in Ghobeiry Municipality Area – Near Mariott Hotel



- **Code:** MABG1
- **Face:** A
- **Location:** Ghobeiry Municipality Area – Near Mariott Hotel from the North
- **Direction:** Al Sultan Ibrahim Rdbt
- **Dimensions:** 20m x 2m
- **Monthly Rental:** \$2,600

Available in May 2017

To All Advertising Agencies & Clients



Roof Top on Verdun Main Street – Facing Verdun 732



- **Code:** MARV2
- **Location:** Verdun Main Street – Facing Verdun 732 – Before Holiday Inn Dunes
- **Direction:** Verdun – Unesco
- **Dimensions:** 5m x 3m
- **Monthly Rental:** \$5,750

Available in May 2017

To All Advertising Agencies & Clients

➔ **Roof Top on Ashrafieh – Mar Mitr – Facing Spinney's**



- **Code:** B1
- **Face:** B
- **Location:** Ashrafieh – Mar Mitr – Facing Spinney's
- **Direction:** Sagesse
- **Dimensions:** 11m x 5m
- **Monthly Rental:** \$5,750

Available in May 2017

To All Advertising Agencies & Clients



Frontlit on Bechara El Khoury – Towards Sodeco Intersection



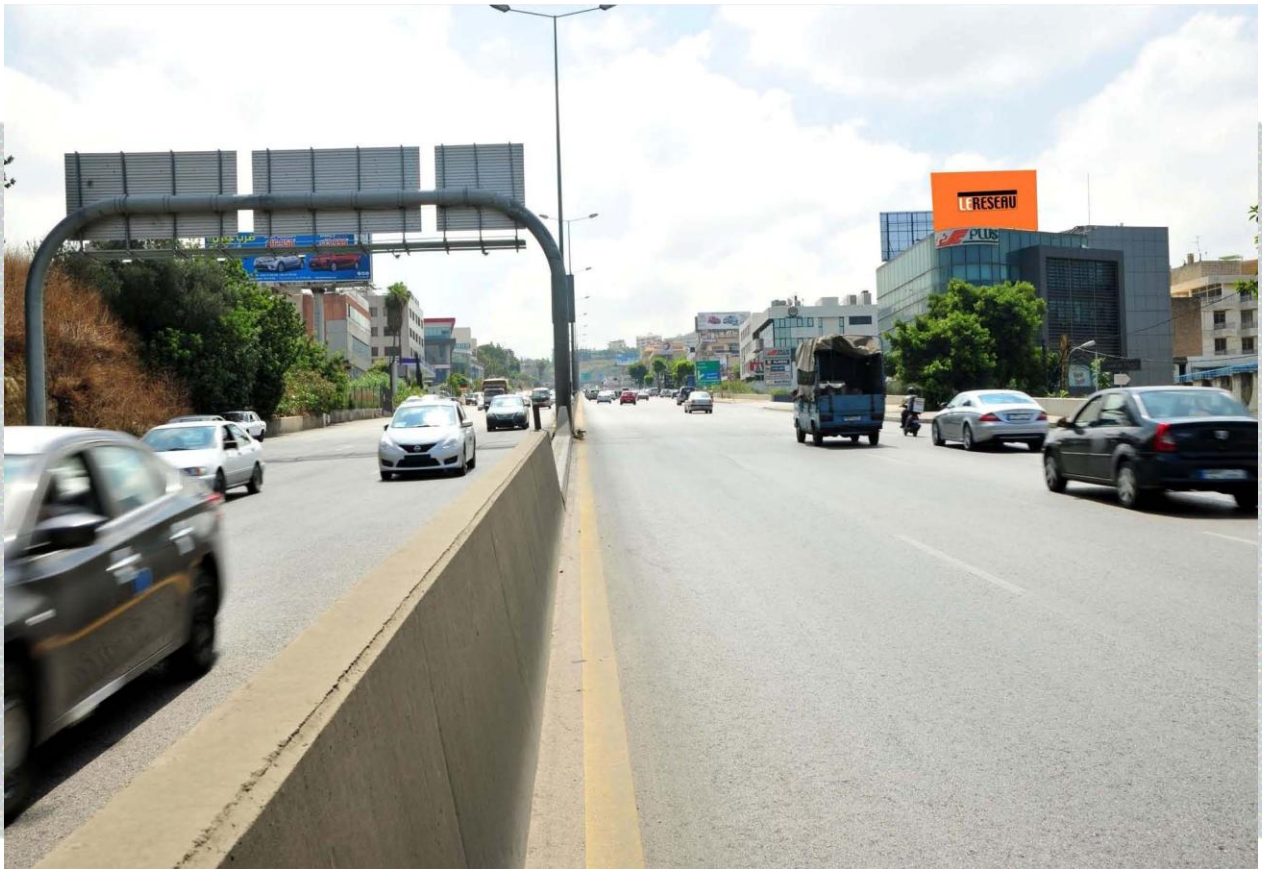
- **Code:** MAFB1
- **Location:** Bechara El Khoury – Towards Sodeco Intersection
- **Direction:** Sodeco
- **Dimensions:** 8m x 4m
- **Monthly Rental:** \$4,650

Available in May 2017

To All Advertising Agencies & Clients



Roof Top on Hazmieh Highway – TSC Plus Center



- **Code:** MARB1
- **Face:** A
- **Location:** Hazmieh Highway – TSC Plus Center
- **Direction:** Aley
- **Dimensions:** 10m x 5m
- **Monthly Rental:** \$6,450